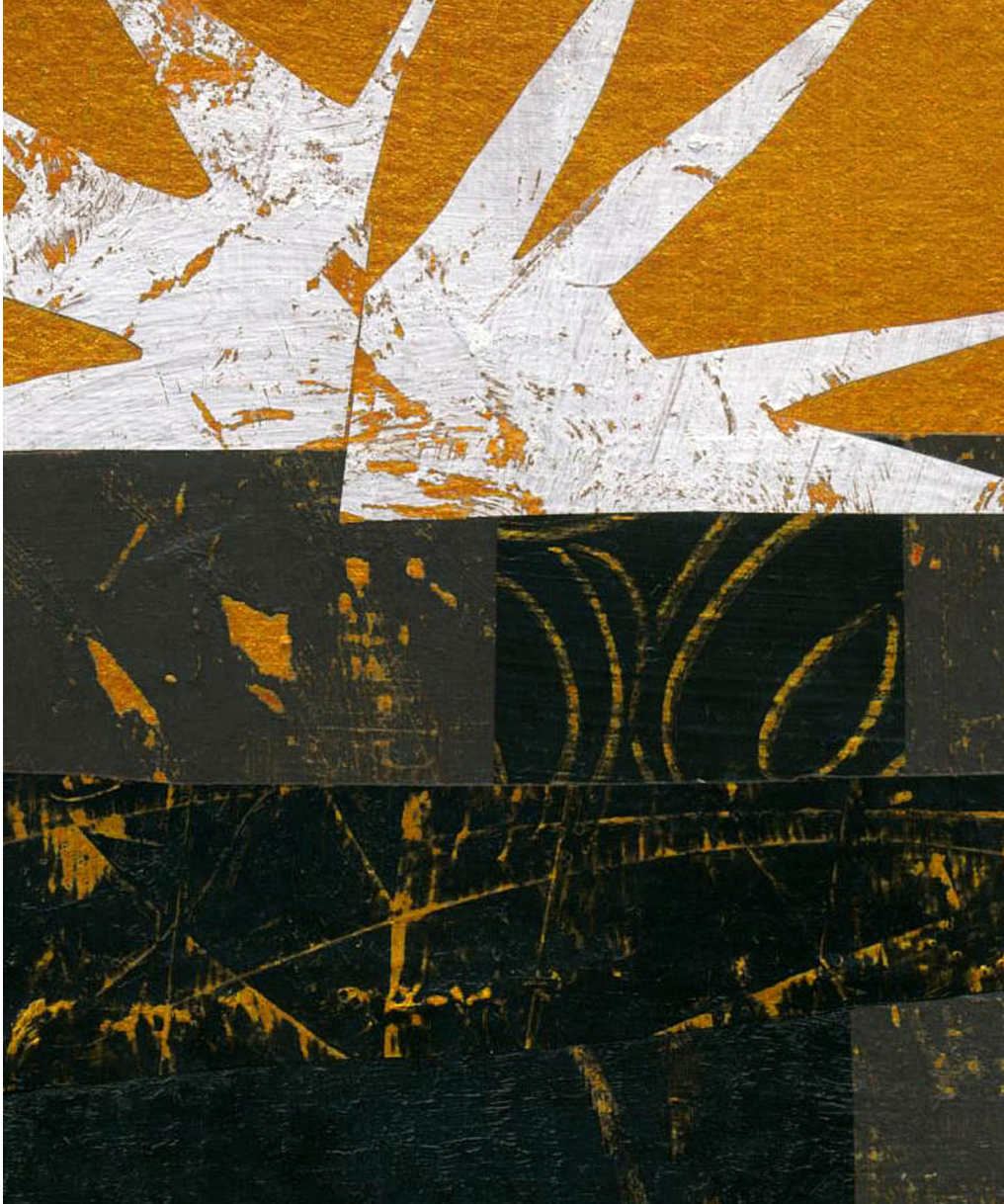


THIRD SUNDAY OF ADVENT

THE CANDLE of JOY

DECEMBER 12, 2021

ADVENT
A Season of Expectation



Those Who Walked in Darkness © Jan Richardson. janrichardson.com
Jan Richardson's images invite us to see our story and The Story in new ways.

WHITE MEMORIAL
— PRESBYTERIAN CHURCH —

WE GATHER TO WORSHIP

** Please rise in body or spirit.*

Greeting

Kirsten Homdrom

One: The joy of our Lord Jesus Christ be with you all.

All: And also with you.

One: Let us prepare for worship.

Preparation for Worship

Almighty God, you send your Son into a world where the wheat must be winnowed from chaff and wickedness clings even to what is good. Let the fire of your Spirit purge us of greed and deceit, so that, purified, we may find our peace in you and you may delight in us. We ask this through him whose coming is certain, whose day draws near, your Son, our Lord Jesus Christ, who lives and reigns with you in the unity of the Holy Spirit, one God, forever and ever. Amen.

Prelude

(8:00) *Sleepers Wake, A Voice is Calling*

Johann Sebastian Bach (1685-1750)

(9:30 & 11:00) *Gaudeamus*

Arnold Sherman (b. 1948)

WMPC Handbell Choir

Christian Welcome and Announcements

Anne Galliher

Please pass the Friendship Register to your neighbor and include all requested information.

Children through fifth grade will be invited forward for the lighting of the Advent Wreath, after which, they may return to their seats.

Minute for Generosity

Peter Williams

Call to Worship and Advent Wreath Lighting *(all singing)*

text by Thomas H. Troeger; music by Sally Ann Morris

Are you at-tend-ing Christ sound a-sleep, Mar-y the moth-er hush-ing the sheep? What-ev-er part you play in the sto - ry, God grant you a heart o-pen to glo - ry!

One: Sing aloud, O daughter Zion; shout, O Israel!

All: Rejoice and exult with all your heart, O daughter Jerusalem!

One: The Lord has taken away the judgments against you, he has turned away your enemies.

All: The king of Israel, the Lord, is in your midst; you shall fear disaster no more. (Zephaniah 3:14-15)

(lighting of Advent candles)

One: Let us pray.

All: Almighty God, you have made us and all things to serve you, now prepare the world for your rule.

Come quickly to save us, so that wars and violence shall end, and your children may live in peace, honoring one another with justice and love; through Jesus Christ, who lives in power with you in the unity of the Holy Spirit, one God, now and forever. Amen.

**Hymn 348 – Lo, He Comes with Clouds Descending*

HELMSLEY

***Call to Confession**

Each week during Advent we light a “new” candle. The traditional Sundays of Advent represent hope, peace, joy, and love. This week is “joy.” Today we light the joy candle, expectant of the joy which God provides in every season of life.



Come Unto Me, © 2008
James Fissel

***Prayer of Confession**

We confess, God of joy, that we have not always looked to you for guidance. Forgive us when we lose hope. Forgive us when we practice conflict and not peace. Forgive us when we have slumbered instead of remaining awake to the power of your Holy Spirit and the joy which it alone can provide. Help us to avoid the trappings of the world. Help us to resist allowing the world’s fears to become our fears. Allow us to see your signs of promise in these days of Advent that we might feel the fullness of your power to restore and renew. Prepare our lives to celebrate the birth of Jesus, in whose name we pray. Amen.

***Assurance of Pardon**

***Passing of the Peace**

One: The peace of our Lord Jesus Christ be with you.

All: And also with you.

***Response Hymn 113 – Refrain**

GLORIA

Glo - - - - ri - a in ex - cel - sis De - o!

Glo - - - - ri - a in ex - cel - sis De - o!

WE PROCLAIM GOD’S WORD

Sacrament of Baptism

(9:30) **Dalton James Milewski**, child of Marissa and Ryan Milewski

(11:00) **Groves Edward Hice**, child of Martha and AJ Hice

Old Testament Lesson – Isaiah 12:2-6; pew Bible, p. 603

(11:00) **Anthem – Climb to the Top of the Highest Mountain** Carolyn Jennings
WMPC Adult Choir

*Climb to the top of the highest mountain, Joyous tidings proclaim to the world,
Lift up your voice, Shout the good news: Behold, your Lord comes to you.*

*He will feed his flock like a shepherd, He will carry the lambs in his arms,
He will ever keep them safe from harm. Behold, your Lord comes to you.*

*He who made the stars in the heaven, He who fashioned the earth and the sea,
From time eternal he was God, The Alpha and Omega, He. Behold your Lord!*

*He will come in power and glory, He will rule with mercy and truth,
Hope of the nations, Light of all the world.*

*He will love the little children, He will hold them in his arms.
Love him and trust him as a child, Behold, your Lord comes to you.*

New Testament Lesson – Luke 3:7-18; pew Bible, p. 56

One: The word of God for the people of God.

All: Thanks be to God.

(11:00) A Time With Young Disciples

At the 11:00 service, Kindergartners through 2nd Graders will meet with Lucy Whitford at the door near the baptismal font, to be joined by Ashlyn Whitford from the OnPoint service for Worship Enrichment in L201.

It is essential, for Presbyterians, that we believe we bring our “whole selves” to worship. We even bring the moments when we have fallen short of God’s claim on our lives. Confession, though difficult, is a hallmark of how we understand ourselves as followers of God.

Greeting one another with “peace” is also a hallmark of our worship. Once we have been “made one” by our confession and our need for God’s grace, we are most fully able to share peace with one another.

Our theme this Advent is “what part do we play in the drama of Advent?” Today we ask, “do we play the part of those who expect God’s joy?” A question: if we do not look to God to provide joy, then what exactly are we living for, hoping for, waiting for?

Living as a “child of light” means being ever ready for joy in the midst of sorrow. This is the finest definition of living in “expectation.” The refrain of this hymn is powerful and sure and when we sing, “shine in my heart, Lord Jesus” we are confessing the truest faith of Advent and Christmas itself.

Sermon – “*Playing the Part of a People of Expectation*”

Christopher Edmonston

WE RESPOND TO GOD’S WORD

***Hymn 377** – *I Want to Walk as a Child of the Light*

HOUSTON

Prayers of the People and the Lord’s Prayer

Grier Booker Richards

**Our Father, who art in heaven, hallowed be thy name,
thy kingdom come, thy will be done, on earth as it is in heaven.
Give us this day our daily bread; and forgive us our debts,
as we forgive our debtors; and lead us not into temptation, but deliver us
from evil.
For thine is the kingdom and the power and the glory, forever. Amen.**

Presentation of Tithes and Offerings

Musical Offering

(8:00) *Come, Thou Long Expected Jesus*

Mark A. Miller (pub. 2011)

Amelia Mehr, soprano

*Come, thou long expected Jesus, born to set thy people free,
From our fears and sins release us, let us find our rest in thee.
Israel’s strength and consolation, hope of all the earth thou art,
Dear desire of every nation, joy of every longing heart.*

*Born to save, born to heal, come, O Savior, come.
While we wait, while we pray, come, Savior, come.
Hope of all heaven and earth, come, Jesus come. O Jesus, come.*

*Born thy people to deliver, born a child and yet a King,
Born to reign in us forever, now thy gracious kingdom bring.
By thine own eternal Spirit rule in all our hearts alone,
By thine all sufficient merit raise us to thy glorious throne.*

(9:30) *Lo, How a Rose E’er Blooming*

Johannes Brahms (1833-1897)

(11:00) *Peace I Leave With You*

Amy Beach (1867-1944)

WMPC Adult Choir

*Peace I leave with you, my peace I give unto you. Not as the world giveth
give I unto you. Let not your heart be troubled.*

*** Offertory Response Hymn 121** – stanza 3

ST. LOUIS

How si - lent - ly, how si - lent - ly, the won - drous gift is given! So
God im - parts to hu - man hearts the bless - ings of his heaven. No
ear may hear his com - ing, but in this world of sin, where
meek souls will re - ceive him, still the dear Christ en - ters in.

***Affirmation of Faith** (adapted from A Declaration of Faith, 1977)

**Jesus Christ stands at the center of the biblical record.
The Bible is the account of God's word and action in history,
together with the people's response in faith.
It tells how the Lord has moved with Israel
and the church towards the kingdom of God,
which is God's just and loving rule over all.
It is the story of the one God,
who is the Father, the Son, and the Holy Spirit.
That story is still unfolding and in faith we make it our own.
It forms our memory and our hope.
It tells us who we are and what we are to do.
To retell it is to declare what we believe.**

We begin today with "Jesus Christ stands at the center of the biblical record." Meaning that Jesus is the primary interpretive lens through which we understand both the Old and New Testaments. All scripture thus leads us to Jesus as it flows from Jesus.

WE GO IN GOD'S NAME

Hymn 79 – *Light Dawns on a Weary World

TEMPLE OF PEACE

***Charge and Benediction**

***Chiming of the Trinity**

The worship service ends with the Chiming of the Trinity.
Please be mindful of those who remain to listen to the postlude.

Postlude – *Love Has Come*

arr. David Sims

* * *

Advent Wreath Lighters

8:00 am - Carl Stoddard; Robert Stoddard; Judy and Dan McConnell

9:30 am - Brooks and Smith Jordan with Thomas and Henry

11:00 am - Kim, Reid, and Robert Walker

* * *

The flowers in Jane Bell Gathering Space today are given to the glory of God and in loving memory of William Alexander "Kirk" Kirkland III, by his family. The service of Witness to the Resurrection was held Friday in the sanctuary.

* * *

**Music in today's service presented with permission under
Podcast/Streaming License with One License #714069.**

WELCOME TO WHITE MEMORIAL PRESBYTERIAN CHURCH, PC (USA)

We are glad you are worshipping with us.
Visiting? Deacons can be found in the Narthex
to offer a friendly greeting, answer
questions and provide directions.
New members are received after attending
Believing & Belonging @WMPC Class.
Visit whitememorial.org/join
or contact Elizabeth Viohl at ext. 206
for details, class dates and registration.

THINGS TO KNOW:

- **Restrooms** are located on the hallway to Jane Bell Gathering Space on the Pulpit side and also on the first floor of the Luther Building.
- **Childcare** is available for children up to four years old.
- **Sunday School** is offered at 9:30 for all ages.
- **Refreshments** Coffee stations are located in The Connector and Main Hall
- **The sanctuary** has a loop hearing aid system and an FM system.
- **Live-streamed services** are at whitememorial.org.
- **Radio**, WPTF 680 AM, every other Sunday at 11:00 a.m.: next broadcast is today, December 12.
- **Bulletins** left in the sanctuary following worship services are recycled as part of our care for God's creation.



We are a Stephen Ministry congregation.

PASTORAL & PROGRAM STAFF:

CHRISTOPHER EDMONSTON, Pastor
ANDREW AMODEI, Executive Director
CYNTHIA BAGGETT, Director of Weekday School
GENEVIEVE BROOKS, Director of Youth Ministry
CATE CHURCH NORMAN, Associate Pastor
for Pastoral Care
BROCK DOWNWARD, Dir. of Music Emeritus
JENNIFER EASTMAN, Director of Young
Children's Ministry
JIM FERRY, Parish Associate
ANNE GALLIHER, Pastoral Resident
KELLY GOLD, Director of Children's and Youth Music
KIRSTEN HOMDRUM, Associate Director of Music
KATHY HOWELL, Communications Director
GLORIA JOHNSON, Associate Pastor for Outreach
LIZ MCKEE, Director of Development
ERIC NANZ, Associate Director of Music and
Worship Arts
LINDA NUNNALLEE, StepUp Director
CHIP POPE, Associate Pastor for Family Ministry
GRIER RICHARDS, Associate Pastor for Discipleship
and Adult Faith Formation
ART ROSS, Pastor Emeritus
JUDY YATES SIKER, Parish Associate
LYNN SPRINGFIELD, Director of Elementary Ministry
MARTHA STEVENSON, Educator Emerita
JEAN WILLIAMS, Parish Nurse
KARL ZINSMEISTER, Director of Music

AFTER HOURS PASTOR ON CALL: 919-605-4593

Each Sunday, we offer four opportunities for you to worship with us at White Memorial (8:00, 9:30 and 11:00 a.m. in the Sanctuary and 11:00 a.m. OnPoint@1704 Edinburgh - Main Hall). While you will notice differences in music, location and worship leadership among our different services, what unites us in our worship is our scripture, liturgy and sermon. All services use the same Call to Worship, Prayer of Confession, readings from Scripture and Affirmation of Faith.

JOYS & CONCERNS

PRAYERS AND CHRISTIAN CONCERNS TO

Jenna, Reid, Reid, Dixon and Sadler Tracy, on the death of Jenna's mother, Hilda Holt Price, December 3, Raleigh, NC.

Gwen and Andy Whiteman, and Andrew Whiteman, on the death of Gwen's father, Orval Max Conner, December 3, Burlington, NC.

* * *

2022 GENEROSITY UPDATE

As of Wednesday, December 8, we have received 561 pledges totaling \$2,906,166.29. If you have not already, please consider making a pledge at www.whitememorial.org/generosity.

YEAR END CONTRIBUTIONS

Please note that all year-end contributions must be received in the Finance Office by 5:00 p.m. on December 31, 2021 or postmarked by December 31, 2021 to be claimed as a 2021 donation.

NOMINATIONS BEING ACCEPTED FOR NEW OFFICERS

The Churchwide Nominating Committee starts meeting in mid-January to consider nominations for church Elders and Deacons, class of 2025. Nominations are now being accepted. Please give prayerful consideration to placing a church member into nomination for these critical leadership roles.

The nomination form can be found online: www.whitememorial.org.

All recommendations must be received by January 12, 2022.

* * *

For your convenience, offering baskets can be found near the Exit doors in the front of the Sanctuary as you leave today's service. If you're more comfortable giving online, you may do that through our website at www.whitememorial.org.

Please take your bulletin with you and either dispose of it in the recycling receptacle outside or take it home. Thank you.

WORSHIP | EMBRACE | SERVE

in the manner of Christ

WHAT'S HAPPENING THIS WEEK AT WMPC?

Please note: The City of Raleigh is working on Oberlin Road between Wade Avenue and Fairview Road for the foreseeable future. You can find a map on our website to help navigate the church campus.

SUNDAY | DECEMBER 12

Psalms 85:1-2, 8-13; Jeremiah 1:4-10; Acts 11:19-26

Healing Through Grief

3:00-4:30 p.m. | Zoom.

MONDAY | DECEMBER 13

Psalms 125; 1 Kings 18:1-18; Ephesians 6:10-17

Women's Monthly Fellowship Luncheon and Christmas Service

11:00 a.m. | Sanctuary & Live Stream

12:00 p.m. | Luncheon | Main Hall

All are invited to attend the Women's Annual Christmas service with communion and a Christmas hymn sing led by Eric Nanz, followed by our Fellowship Luncheon.

Pickleball at WMPC!

2-4:00 p.m. | Pickard Hall

TUESDAY | DECEMBER 14

Psalms 125; 2 Kings 2:9-22; Acts 3:17-4:4

Men's Breakfast & Bible Study

Breakfast Line | 7:00 a.m. | Main Hall

Bible Study | 7:30 a.m. | In-person or Zoom

[Registration required.](#)

Women's Breakfast & Fellowship

7:00-8:00 am. | The Hub

Women of all ages are invited to come for a hot breakfast, fellowship, study and prayer. This group studies the PW Bible lesson once a month and on other weeks they study a variety of topics. Hosted by Circle M.

Aging Well: Downsizing is Daunting

12:30 | Zoom

Senior Move Manager Pat Barnard, who has helped many seniors over the last seven years downsize, will discuss ways to make it less daunting. Pat is a member of White Memorial and partner in Rightsizing Raleigh. Contact Liisa Ogburn at liisaogburn@gmail.com for Zoom link.

WEDNESDAY | DECEMBER 15

Psalms 125; Malachi 3:16-4:6; Mark 9:9-13

Lectio Divina & Centering Prayer

11:00 a.m. - noon | Zoom

We'll begin with Lectio Divina, a contemplative way to read the Bible, followed by Centering Prayer. You are welcome to come for one or stay for both. [Register to receive your Zoom link.](#)

Outreach Ministry Heads To Note in the Pocket

1:00-4:00 p.m. (off site)

We have a group going to Note in the Pocket to help sort clothes. If you'd like to join us, please contact Ruth Landers at ruth@landers.me.

Wednesdays Together Dinner

5-6:30 p.m. | Main Hall-Edinburgh Building

Make your reservations by 8:00 p.m. on Sunday, December 12.

Pickleball at WMPC!

6-8:00 p.m. | Pickard Hall

Midweek Advent Evening Worship Services

Sanctuary and Live Stream | 6:30 p.m.

THURSDAY | DECEMBER 16

Psalms 89:1-4, 19-26; 2 Samuel 6:1-11; Hebrews 1:1-4

Keenagers

10:45 a.m. | Geneva Hall & Zoom

Philip Scott will share his journey with the clarinet and play for us.

20s + 30s: Ask Christopher Anything

7:00 p.m.

WMPC's 20s + 30s are invited to join us for "Ask Christopher Anything!" We'll spend time chatting with our pastor and enjoy a hot chocolate bar. For more detail/information, contact Pastoral Resident Anne Galliher at agalliher@whitememorial.org.

FRIDAY | DECEMBER 17

Psalms 89:1-4, 19-26; 2 Samuel 6:12-19; Hebrews 1:5-14

SATURDAY | DECEMBER 18

Psalms 89:1-4, 19-26; Judges 13:2-24; John 7:40-52

* * *

Christmas Share

To purchase cards and designate your donation, stop by Gloria Johnson's office (W301), M-F, 9:00 a.m. - 5:00 p.m.

Youth Fundraiser

Commemorative ornament and note cards are available for you and everyone on your gift list! \$20 each. [Purchase online](#) or in-person on Sundays at 10:30 a.m.

December Churchwide Collection

We will take coats, gloves, hats and scarves in all sizes to our agency partners who work with those who are homeless, families in crisis, and other vulnerable populations. Clothing can be dropped off in the red bins in front of the Witherspoon building.

SAVE THE DATE

2022 Women's Retreat: Breath for the Bone-Tired

Saturday | January 29

8:00 a.m. - 2:00 p.m. | WMPC campus

We invite all women to join us on Saturday, January 29 for the 17th annual Women's Retreat, featuring Meg Peery McLaughlin from University Presbyterian in Chapel Hill, NC. For more details and to register, visit whitememorial.org/register.

* * *

REGISTRATION FOR MOST EVENTS CAN BE FOUND ON OUR WEBSITE: WHITEMEMORIAL.ORG/REGISTER

Christmas Eve Worship Services

Friday | December 24

CHRISTMAS EVE BELL SERVICE

3:00 p.m. & 4:00 p.m. | Sanctuary

CHRISTMAS EVE CANDLELIGHT SERVICE

6:30 pm. & 11:00 p.m. | Sanctuary

6:30 p.m. | Main Hall | Edinburgh Building



Sunday | December 26

Combined Worship Services | Sanctuary

8:30 a.m. & 10:30 a.m.

Sunday | January 2

Combined Worship Services | Main Hall

8:30 a.m. & 10:30 a.m.

348 Lo, He Comes with Clouds Descending

1 Lo, he comes with clouds de - scend - ing,
 2 Now re - demp - tion, long ex - pect - ed,
 3 Yea, a - men, let all a - dore thee,

once for our sal - va - tion slain; thou - sand,
 comes in sol - emn splen - dor near; all the
 high on thine e - ter - nal throne; Sav - ior,

thou - sand saints at - tend - ing join to
 saints this world re - ject - ed thrill the
 take the power and glo - ry; claim the

Despite unclear musical origins, the result here is a characteristic early Methodist hymn tune, notable for its breadth and range. It effectively sets a text of similarly mixed sources, one that Charles Wesley regarded as related to "Thy kingdom come" in the Lord's Prayer.

sing the glad re - frain: Al - le -
 trum - pet sound to hear: Al - le -
 king - dom as thine own. Come, Lord

lu - ia, al - le - lu - ia, al - le -
 lu - ia, al - le - lu - ia, al - le -
 Je - sus; come, Lord Je - sus; come, Lord

lu - ia! Christ the Lord re - turns to reign.
 lu - ia! See the day of God ap - pear!
 Je - sus. Thou shalt reign, and thou a - lone!

377 I Want to Walk as a Child of the Light

1 I want to walk as a child of the light. I want to fol - low
2 I want to see the bright-ness of God. I want to look at
3 I'm look-ing for the com - ing of Christ. I want to be with

Je - sus. God set the stars to give light to the world. The
Je - sus. Clear Sun of righ-teous-ness, shine on my path, and
Je - sus. When we have run with pa-tience the race, we

Refrain

star of my life is Je - sus.
show me the way to the Fa - ther. In him there is no dark-ness at
shall know the joy of Je - sus.

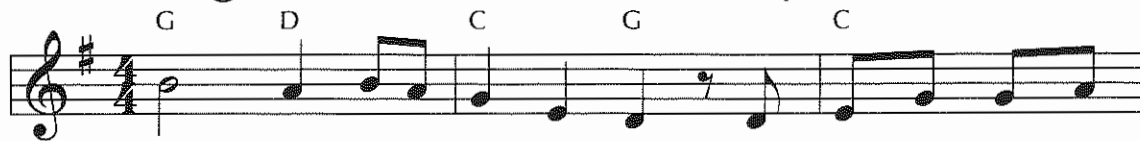
all. The night and the day are both a - like. The Lamb is the

The author/composer of this unrhymed hymn regards it as a meditation and prayer deeply rooted in many scriptures, most connected with the theme of light: Genesis 1:17; Psalm 139:12; Isaiah 60:19; Malachi 4:2; John 14:8; Ephesians 5:8; Hebrews 12:1-2; 1 John 1:5; Revelation 21:23.

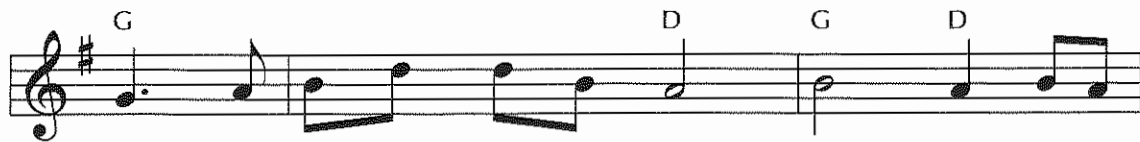
light of the cit - y of God. Shine in my heart, Lord Je - sus.

The image shows a musical score for a hymn. It consists of two staves: a treble clef staff on top and a bass clef staff on the bottom. The key signature is one sharp (F#), and the time signature is 4/4. The lyrics are written below the treble staff. The music features a melody in the treble staff and a harmonic accompaniment in the bass staff. The lyrics are: "light of the cit - y of God. Shine in my heart, Lord Je - sus." The score ends with a double bar line.

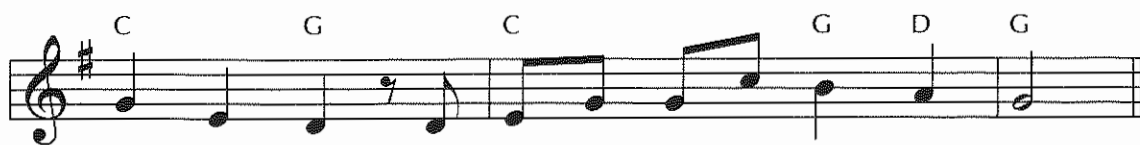
79 Light Dawns on a Weary World



1 Light dawns on a wea - ry world when eyes be - gin to
 2 Love grows in a wea - ry world when hun - gry hearts find
 3 Hope blooms in a wea - ry world when crea - tures, once for -



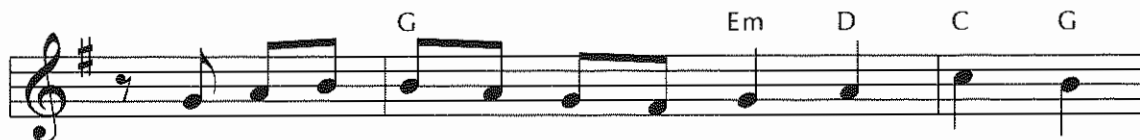
see all peo - ple's dig - ni - ty. Light dawns on a
 bread and chil - dren's dreams are fed. Love grows in a
 lorn, find wil - der - ness re - born. Hope blooms in a



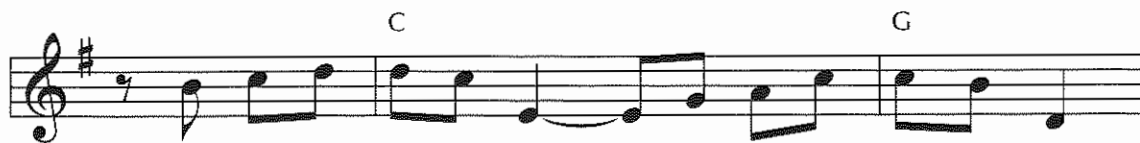
wea - ry world: the prom - ised day of jus - tice comes.
 wea - ry world: the prom - ised feast of plen - ty comes.
 wea - ry world: the prom - ised green of E - den comes.



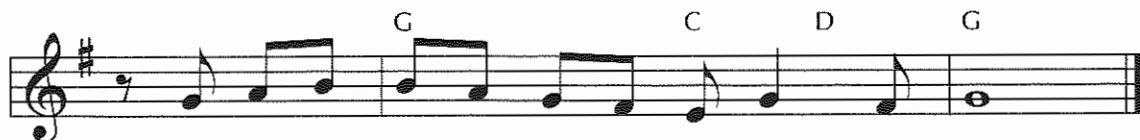
The trees shall clap their hands; the dry lands, gush with springs;



the hills and moun - tains shall break forth with sing - ing!



We shall go out in joy, and be led forth in peace,



as all the world in won - der ech - oes sha - lom.

This is a hymn whose tune came first. Upon hearing it, the author recalled the watered garden of Isaiah 58:11, which in turn led to Isaiah 55:12, paraphrased in the refrain. Then came the stanzas, organized around their first two words: Light dawns, Love grows, Hope blooms.