

# WHITE MEMORIAL PRESBYTERIAN CHURCH



THE SERVICE FOR THE LORD'S DAY  
TWENTY SECOND SUNDAY  
AFTER PENTECOST

October 24, 2021  
8:00, 9:30 & 11:00 a.m.

## WE GATHER TO WORSHIP

*\* Please rise in body or spirit.*

### Greeting

*One: The peace of our Lord Jesus Christ be with you all.*

**All: And also with you.**

*One: Let us prepare for worship.*

Kirsten Homdrom

### Preparation for Worship

*Draw your Church together, O God, into one great company of disciples, together following our Lord Jesus Christ into every walk of life, together serving him in his mission to the world, and together witnessing to his love on every continent and island. Amen.*

### Prelude - (8:00 & 9:30) *When We Are Living*

See Hymn 822.

WMPC Handbell Choir

arr. Kevin McChesney (b. 1963)

### (11:00) *Every Day*

WMPC Joyful Noise and Adult Choirs

Sue Ellen Page (1949-2016)

*Every day I will offer you, loving God, my heart and mind.  
Every way I discover you in the work your hand has signed;  
Help me see I'm your image, you have dreamed what I might be,  
Every day in your Spirit, I'll find the love and energy!*

*Every day I will look to Christ and give thanks for wine and bread.  
Through the pain and the emptiness where your world cries to be fed;  
Help me see I can work for change and wherever I might be,  
Every day in your Spirit, I'll find the love and energy!*

*Every day I will take your word, answer your compassion's claim,  
Celebrate every sign of hope, every deed done in your name;  
Help me see you are always there, and your light can shine through me,  
Every day in your Spirit, I'll find the love and energy!*

### Christian Welcome and Announcements

Please pass the Friendship Register to your neighbor and include all requested information.

Jim Ferry

### Minute for Generosity

(8:00) Sandy Jordan; (9:30) Chester Allen; (11:00) Amelia Mehr

### Call to Worship

*One: Lord, open our hearts.*

**All: And our mouths shall proclaim your praise.**

*One: Lord, transform our lives.*

**All: That we may follow your Son and trust your Spirit in all things.**

*One: With the prayers of our hearts and the songs of life,*

**All: Let us worship the Lord our God.**

### \*Hymn 36 – *For the Fruit of All Creation*

AR HYD Y NOS

### \*Call to Confession

WORSHIP | EMBRACE | SERVE

*in the manner of Christ*

### \*Prayer of Confession

Most merciful God, we confess our sin. We do not often practice hospitality and welcome in the manner of Christ. We fail to hear the cries of those around us. We forget that you, Lord God, are generous of heart, slow to anger, and abounding in steadfast love. Through the Holy Spirit teach us to live our lives with a giving spirit of service and celebration. Help us to see that we are most loving and most Christ-like when our doors are opened wide to others. Help us to remember that we have been blessed to give. In the name of Jesus we pray. Amen.

### \*Assurance of Pardon

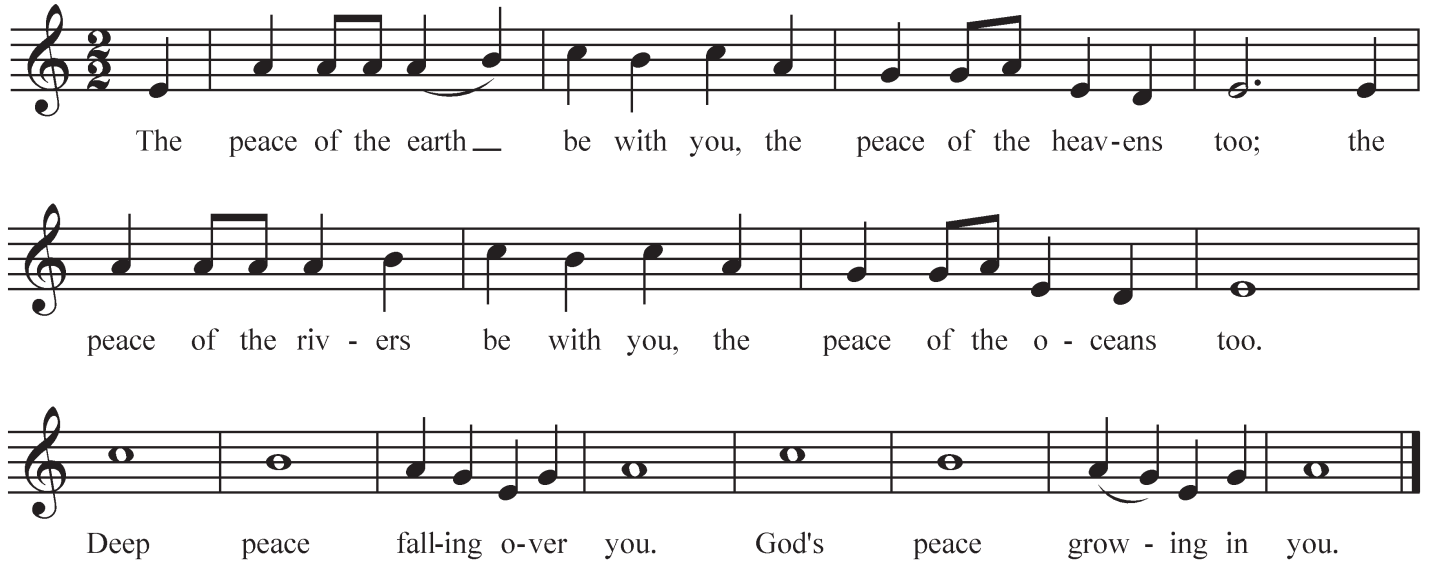
### \*Passing of the Peace

One: *The peace of our Lord Jesus Christ be with you.*

All: *And also with you.*

### \*Response Hymn – *The Peace of the Earth*

Guatemalan



The peace of the earth — be with you, the peace of the heav-ens too; the  
peace of the riv - ers be with you, the peace of the o - ceans too.  
Deep peace fall-ing o-ver you. God's peace grow - ing in you.

## WE PROCLAIM GOD'S WORD

### Sacrament of Baptism

(9:30) **Analise Angela Lane and Caroline Elizabeth Lane**, children of Kristine and John Lane

(11:00) **Eliza Wells Battle**, child of Haley and Staats Battle

**John Bryan Stilley, IV**, child of Sterling and John Stilley

### Old Testament Lesson – Psalm 34:1-8; pew Bible, p. 480

(11:00) Anthem – *In the Light of Hope*

Mark Patterson (b. 1969)

WMPC Youth Choir; Kelly Gold, director; Lora Zinsmeister, accompanist

*Deep in the darkness that sometimes seems to surround us,  
When anger and anguish seem far too heavy to bear,  
There is a light shining, there is a voice calling.  
God reaches out with love that meets us anywhere.  
We are called to live in the light of hope,  
Called to walk as a witness to God's unbounded love.  
We are called to rise above the storms that surround us, the fears that confound us.  
We are called to live in the light of hope.  
When mercy and kindness and truth seem lost and forsaken,  
When hatred takes hold and the world's too busy to care,  
Hold on with faith that's stronger, sing out with hope that's brighter,  
Live out your life with love, for all God's people everywhere.  
Just take a step, find the light,  
Let the saving love of Christ shine down through the shadows of your life.  
This anthem was composed for the 2020 Montreat Worship and Music Conference.*

**New Testament Lesson – Mark 10:46-52; pew Bible, p. 44**

*One: The word of God for the people of God.*

**All: Thanks be to God.**

**(11:00) A Time With Young Disciples**

At the 11:00 service, Kindergartners through 2nd Graders will meet with Cliff Britt at the door near the baptismal font, to be joined by Diane Britt from the OnPoint service for Worship Enrichment in L201.

**Sermon – “God is Generous”**

Christopher Edmonston

**WE RESPOND TO GOD’S WORD**

**\*Hymn 691 – Lord, When I Came into This Life**

LAND OF REST

**(8:00) Officer Installation**

**ELDERS:** Bill Barnett, Wesley Jones

**Prayers of the People and The Lord’s Prayer**

Gloria Johnson

**Our Father, who art in heaven, hallowed be thy name,  
thy kingdom come, thy will be done, on earth as it is in heaven.**

**Give us this day our daily bread; and forgive us our debts,  
as we forgive our debtors; and lead us not into temptation,  
but deliver us from evil.**

**For thine is the kingdom and the power and the glory, forever. Amen.**

**Presentation of Tithes and Offerings**

**Musical Offering – (8:00) O God of Mercy**

Simon Lole (b. 1957)

Sydney Coll, soprano

*O God of mercy, God of might,  
In love and pity infinite, teach us,  
As ever in thy sight, to live our life to thee.  
In sickness, sorrow, want, or care,  
Whatever it be, ‘tis ours to share;  
May we, where help is needed, there give help as unto thee.  
And may thy Holy Spirit move al those who live to live in love,  
Til thou shalt greet in heaven above all those who give to thee.*

**(9:30) Jesu, Joy of Our Desiring**

Johann Sebastian Bach (1685-1750)

WMPC Adult Choir

*Jesu, joy of our desiring, holy wisdom, Love most bright;  
Drawn by Thee, our souls aspiring, Soar to uncreated light.  
Word of God our flesh that fashioned, With the fire of life impassioned,  
Striving still to Truth unknown, Soaring dying round Thy throne.  
Through the way where hope is guiding, Hark, what peaceful music rings,  
Where the flock in Thee confiding, Drink of joy from deathless springs.  
Theirs is beauty’s fairest pleasure, Theirs is wisdom’s holiest treasure.  
Thou dost ever lead Thine own, In the love of joys unknown.  
A standard sacred choral work, this piece was first offered at WMPC on June 8, 1947.*

**(11:00) I Believe**

Mark A. Miller

WMPC Youth Choir

*I believe in the sun even when it’s not shining.  
I believe in love even when I don’t feel it.  
I believe in God even when God is silent.*

**WELCOME TO WHITE MEMORIAL  
PRESBYTERIAN CHURCH, PC(USA)**

We are glad you are worshiping with us.  
Visiting? Deacons can be found in the Narthex  
to offer a friendly greeting, answer  
questions and provide directions.  
New members are received after attending  
*Believing & Belonging @WMPC* Class.  
Visit [whitememorial.org/join](http://whitememorial.org/join)  
or contact Elizabeth Viohl at ext. 206  
for details, class dates and registration.

**THINGS TO KNOW:**

- **Restrooms** are located on the hallway to Jane Bell Gathering Space on the Pulpit side and also on the first floor of the Luther Building.
- **Childcare** is available for children up to four years old.
- **Sunday School** is offered at 9:30 for all ages.
- **Refreshments** Coffee stations are located in The Connector and Main Hall
- **The sanctuary** has a loop hearing aid system and an FM system.
- **Live-streamed services** are at [whitememorial.org](http://whitememorial.org).
- **Radio**, WPTF 680 AM, every other Sunday at 11:00 a.m.: next broadcast is today, October 17.
- **Bulletins** left in the sanctuary following worship services are recycled as part of our care for God's creation.



We are a Stephen Ministry congregation.

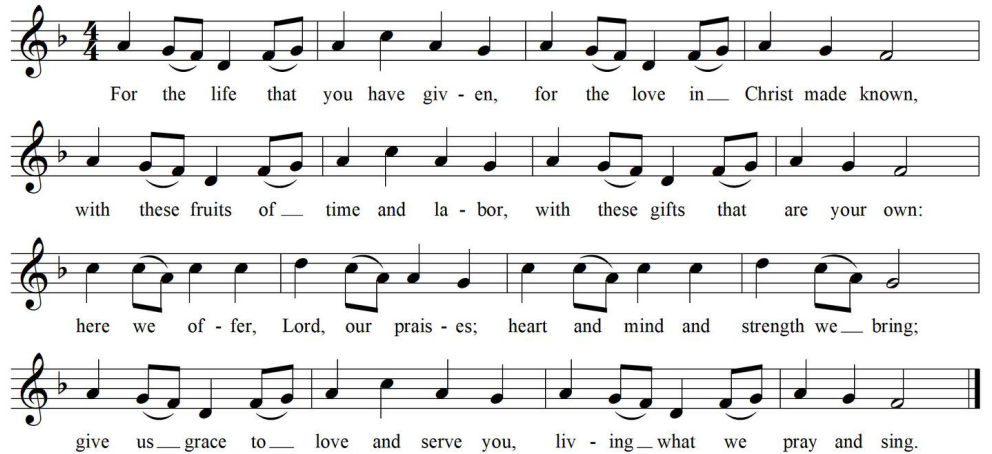
**PASTORAL & PROGRAM STAFF:**

**CHRISTOPHER EDMONSTON**, Pastor  
**ANDREW AMODEI**, Executive Director  
**CYNTHIA BAGGETT**, Director of Weekday School  
**GENEVIEVE BROOKS**, Director of Youth Ministry  
**CATE CHURCH NORMAN**, Associate Pastor  
for Pastoral Care  
**BROCK DOWNWARD**, Dir. of Music Emeritus  
**JENNIFER EASTMAN**, Director of Young  
Children's Ministry  
**JIM FERRY**, Parish Associate  
**ANNE GALLIHER**, Pastoral Resident  
**KELLY GOLD**, Director of Children's and Youth Music  
**KIRSTEN HOMDROM**, Associate Director of Music  
**KATHY HOWELL**, Communications Director  
**GLORIA JOHNSON**, Associate Pastor for Outreach  
**DAVID KIM**, Interim Assistant Youth Director  
**LIZ MCKEE**, Director of Development  
**ERIC NANZ**, Associate Director of Music and  
Worship Arts  
**LINDA NUNNALLEE**, StepUp Director  
**CHIP POPE**, Associate Pastor for Family Ministry  
**GRIER RICHARDS**, Associate Pastor for Discipleship  
and Adult Faith Formation  
**ART ROSS**, Pastor Emeritus  
**JUDY YATES SIKER**, Parish Associate  
**LYNN SPRINGFIELD**, Director of Elementary Ministry  
**MARTHA STEVENSON**, Educator Emerita  
**JEAN WILLIAMS**, Parish Nurse  
**KARL ZINSMEISTER**, Director of Music

**AFTER HOURS PASTOR ON CALL:** 919-605-4593

Each Sunday, we offer four opportunities for you to worship with us at White Memorial (8:00, 9:30 and 11:00 a.m. in the Sanctuary and 11:00 a.m. OnPoint@1704 Edinburgh - Main Hall). While you will notice differences in music, location and worship leadership among our different services, what unites us in our worship is our scripture, liturgy and sermon. All services use the same Call to Worship, Prayer of Confession, readings from Scripture and Affirmation of Faith.

**\*Offertory Response Hymn 717 – *For the Life That You Have Given***  
**PLEADING SAVIOR**



**\*Affirmation of Faith** from The Study Catechism (PCUSA)

*One: What is God's purpose for our lives?*

**All: God wills that we should live by the grace of the Lord Jesus Christ, for the love of God, and in the communion of the Holy Spirit.**

*One: How do we live for the love of God?*

**All: We love because God first loved us. God loves us in Christ with a love that never ends. We entrust ourselves to God's care: giving thanks each day for the wonderful goodness of God. Amazed by grace, we no longer live for ourselves. We live for the Lord who died and rose again, triumphant over death. Therefore, we take those around us to heart, especially those in need, knowing that Christ died for them no less than for us.**

**WE GO IN GOD'S NAME**

**\*Hymn 418 – *Softly and Tenderly Jesus is Calling*** SOFTLY AND TENDERLY

**\*Charge and Benediction**

**\*Chiming of the Trinity**

The worship service ends with the Chiming of the Trinity.  
Please be mindful of those who remain to listen to the postlude.

**Postlude – *Ein Feste Burg***

Helmut Walcha (1907-1991)

*This piece was played during WMPC's 25th Anniversary year, 1971.*

\* \* \*

**The flowers in the chancel today** are given to the glory of God and in loving memory of Kay Elizabeth Ellis Menius, by her family. The service of Witness to the resurrection for Kay was held yesterday.

\* \* \*

**Music in today's service presented with permission under  
Podcast/Streaming License with One License #714069.**

## JOYS & CONCERNS

### WEDDINGS

**Grace Gentry Barnard and Ford Springer**, October 16, Figure Eight Island, NC.  
Grace is the daughter of Pat and Billy Barnard.

\* \* \*

### CALENDAR FOR THE WEEK

**Please note:** The City of Raleigh is working on Oberlin Road between Craig Street and Fairview Road for the foreseeable future. You can find a map on our website to help navigate the church campus.

Please allow yourself 10 extra minutes before and after programming and services in case there are delays related to new traffic patterns. We will keep you up-to-date on progress so you can prepare and continue to participate in the life of the church with as little inconvenience as possible.

#### SUNDAY | OCTOBER 24

*Psalm 65; Luke 18:9-26*

**Sounds on Oberlin presents Jazzical with Joel**

**3:00 p.m. | Main Hall & Live Stream**

**Cancer Companions**

**4:30-6:00 p.m. | Zoom | [Registration required](#)**

**Blessing of the Animals**

**5:30-6:30 p.m. | Carol Copeland Courtyard**

#### MONDAY | OCTOBER 25

*Psalm 87; Joel 3:1-8; 1 Peter 4:12-19*

**No Pickleball Today.**

**Red Cross Blood Drive**

**Monday | October 25**

**2:00-6:30 p.m. | Pickard Hall | [Registration required](#)**

**Powerful Tools for Caregivers**

**6-7:30 p.m. | Geneva Hall (K100)**

Powerful Tools for Caregivers is six 90-minute sessions of practical training that provides caregivers with tools and strategies to better cope with their unique challenges. Space is limited. Contact Lisa Hoskins at The Center for Volunteer Caregiving with questions and to register, 919-460-0567 or [lhoskins@ctrolcare.org](mailto:lhoskins@ctrolcare.org).

#### TUESDAY | OCTOBER 26

*Joel 3:9-16; 1 Peter 5:1-11*

**Men's Breakfast & Bible Study**

**Breakfast Line | 7:00 a.m. | Main Hall**

**Bible Study | 7:30 a.m. | In-person or Zoom**

**[Registration required](#)**

#### WEDNESDAY | OCTOBER 27

*Joel 3:17-20; Matthew 21:28-32*

**Lectio Divina & Centering Prayer**

**11:00 a.m. - noon | Zoom**

Lectio Divina is a contemplative way to read the Bible. It's an ancient practice that means "holy reading", where you slow down and listen for God's word. Lectio Divina will take place from 11:00-11:30, followed by Centering Prayer from 11:30-noon. You are welcome to come for one or stay for both. You will need to register to receive Zoom link. Associate Pastor Cate Church Norman and Pastoral Resident Anne Galliher will facilitate. [Register for Zoom](#)

**Wednesdays Together Dinner**

The kitchen staff is participating in Trunk or Treat and will have quarts of WMPC Spaghetti Sauce available for \$7.00 each. Place order by 8:00 p.m., October 24. If you do not plan on attending Trunk or Treat,

but would like sauce, we will have a separate pick-up station.

**[Order your spaghetti sauce by 8:00 p.m., Sunday, October 24.](#)**

**Trunk or Treat**

**5:30-6:30 p.m. | McDonald Lane & Chapel Parking Lot**

**Pickleball at WMPC!**

**6-8:00p.m. | Pickard Hall**

Why not pick up a game (or watch) after Wednesdays Together Dinner?

#### THURSDAY | OCTOBER 28

*Psalm 119:137-144; Jeremiah 33:14-26; 2 Corinthians 1:1-11*

**Keenagers**

**10:45 a.m. | Geneva Hall & Zoom**

In addition to Halloween costumes and candy, Heather Garrabrant will talk about "Transport 4 Seniors", a service that can be of assistance to many of us. For more information, please contact Leigh Ann Dailey at [ldailey@whitememorial.org](mailto:ldailey@whitememorial.org).

**Anxiety, Depression + Support Group**

**7:00-8:30 p.m. | C301**

The Mental Health and Wellness Ministry is proud to announce the start of a new support group this fall. The Anxiety, Depression + Support Group is open to anyone who is experiencing mental health challenges and seeking a community of support. The first meeting will be Thursday, October 28 from 7:00 - 8:30 p.m. in Room C301. The group will then meet at the same time and place every other Thursday evening. If you are experiencing mental health challenges, you are not alone. We are excited to offer this opportunity to our congregation and beyond. If you would like to learn more, please contact Cate Church Norman at [cchurchnorman@whitememorial.org](mailto:cchurchnorman@whitememorial.org).

#### FRIDAY | OCTOBER 29

*Daniel 7:1-3, 15-18; Psalm 149; Ephesians 1:11-23*

#### SATURDAY | OCTOBER 30

*Psalm 119:137-144; Habakkuk 2:5-11; John 8:39-47*

\* \* \*

### SAVE THE DATES

**Evensong Worship Service**

**Sunday | November 7**

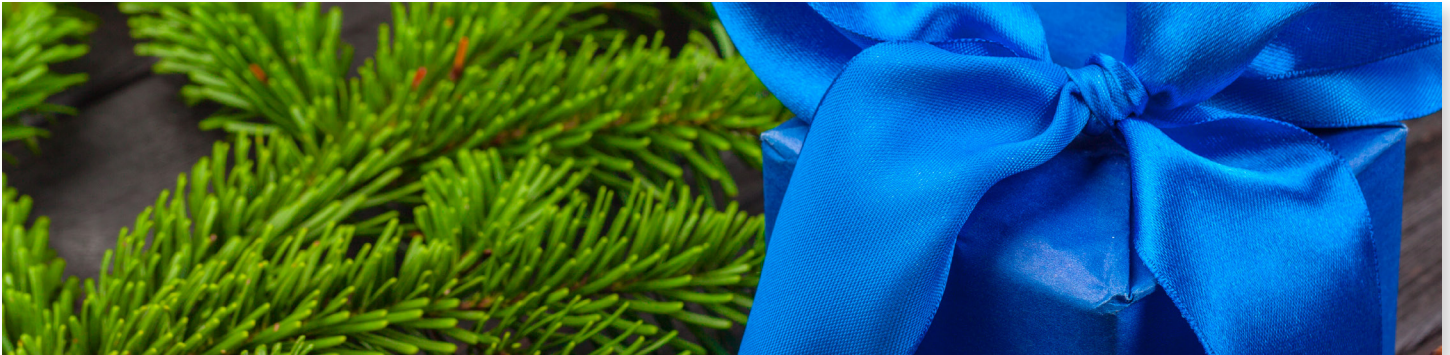
**4:00 p.m. | Sanctuary**

\* \* \*

**REGISTRATION FOR MOST EVENTS CAN BE FOUND ON OUR WEBSITE: [WHITEMEMORIAL.ORG/REGISTER](https://www.whitememorial.org/register)**



# WMPC'S CHANCEL GLORIFICATION GUILD: A MINISTRY THAT NEEDS YOUR HELP TO BLOOM!



TO PROPERLY PLAN FOR ADVENT/CHRISTMAS WE NEED YOUR MEMORIALS AND HONORARIA IN ADVANCE.

Due to the pandemic over the past year and a half, all reserves for this ministry have been depleted. With the addition of Main Hall, our resources to visually enhance all our worship spaces are increasingly stretched. We hope you will consider a contribution to the fund that will enable us to:

- provide greenery and arrangements for Advent/Christmas in the Sanctuary, Main Hall and the Chapel; and
- provide floral and visual arts displays on other Sundays during the year.

Over the past few years, the former Flower Guild has increased its activities and its creativity to include visual displays for worship services that incorporate dried material, vegetables representing harvest, art objects, fabrics, and more. Their new name, *Chancel Glorification Guild*, is more inclusive of their artistic and inspirational expressions that blend diverse materials. We now have **three** worship spaces: the new **Main Hall** in the Edinburgh Building; the **Sanctuary**; and the **Chapel**. While each space differs in architectural style, each has a “chancel” where four key symbols are represented: a pulpit (Word), a table and font (Sacraments), and a cross (resurrection). Our Chancel Glorification Guild works

behind the scenes to adorn these spaces, that is to enhance our worship experience and to bring glory to God.

Contributions in memory of a loved one or in honor of a family member, friend, or member of the church family are welcomed. Contributions may be for any amount; suggested gift is \$25 or more. All those honored or memorialized will be listed in the bulletin inserts on December 19 and Christmas Eve services.

Use the form below to list who is being memorialized or honored and who is making the gift. Gifts are encouraged in early November so that greenery and materials can be ordered. However, requests may be made through noon on **Monday, November 29**. Send your contribution to Rebecca Turner, and call her at 919-834-3425, ext. 222, with questions.

*The guild has annually requested donations at Advent/Christmas and Lent/Easter each year to help with seasonal displays and at other times. Gifts to provide an arrangement for either the Sanctuary or Main Hall on a specific Sunday are welcomed throughout the year. Examples might be, to remember a loved one, to commemorate an anniversary, or to celebrate a baptism, graduation, wedding, or other milestone.*

---

## ADVENT/CHRISTMAS GREENERY MEMORIALS AND HONORARIA

PLEASE PRINT.

**DEADLINE: Noon on Monday, November 29**

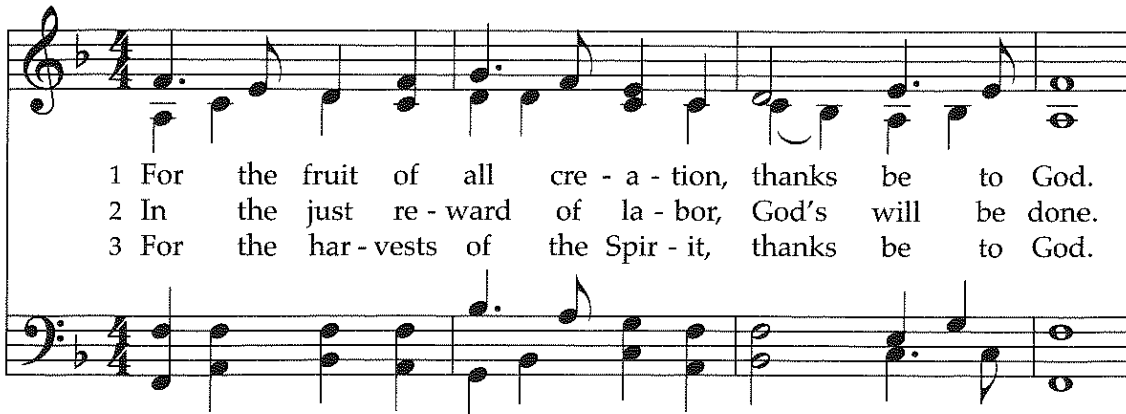
Name of Donor: \_\_\_\_\_ Phone: \_\_\_\_\_

Given: \_\_\_\_\_ in honor of or \_\_\_\_\_ in memory of (first and last names only — no titles, please)


Name: \_\_\_\_\_

Name: \_\_\_\_\_

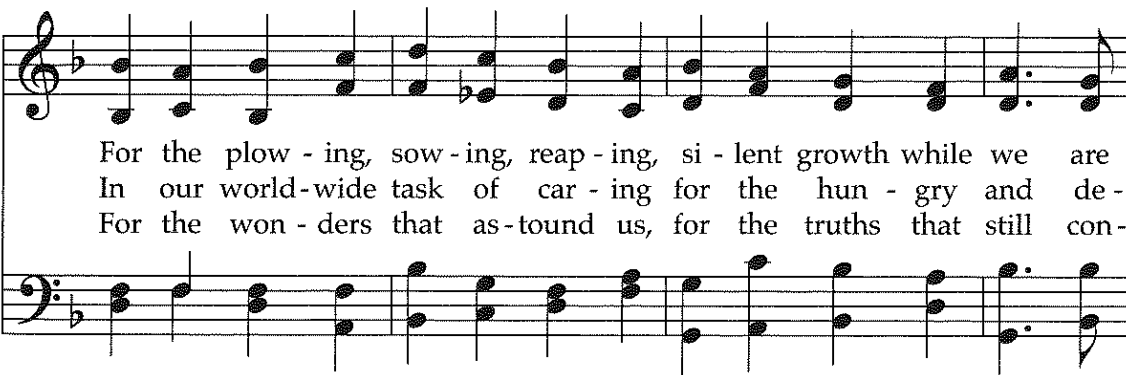
Amount of donation: \_\_\_\_\_



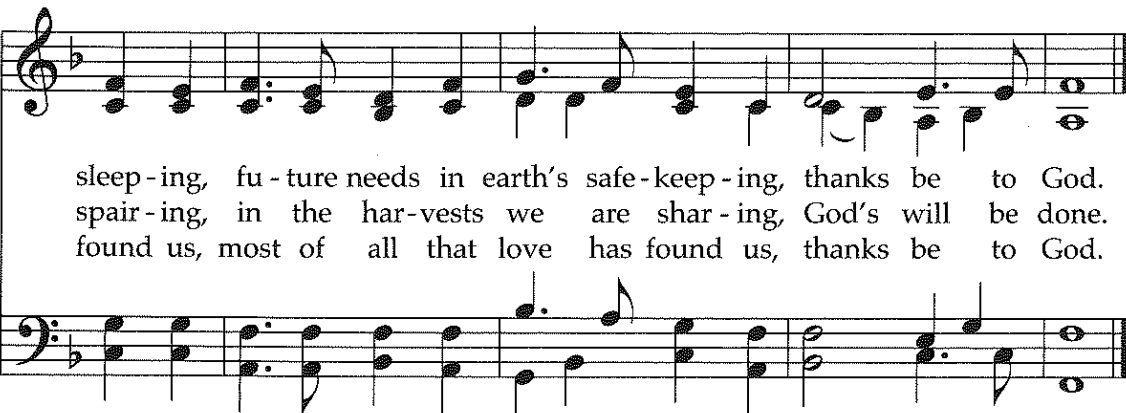
1 For the fruit of all cre - a - tion, thanks be to God.  
 2 In the just re - ward of la - bor, God's will be done.  
 3 For the har - vests of the Spir - it, thanks be to God.



For the gifts to ev - ery na - tion, thanks be to God.  
 In the help we give our neigh - bor, God's will be done.  
 For the good we all in - her - it, thanks be to God.



For the plow - ing, sow - ing, reap - ing, si - lent growth while we are  
 In our world-wide task of car - ing for the hun - gry and de -  
 For the won - ders that as - tound us, for the truths that still con -



sleep - ing, fu - ture needs in earth's safe - keep - ing, thanks be to God.  
 spair - ing, in the har - vests we are shar - ing, God's will be done.  
 found us, most of all that love has found us, thanks be to God.

Originally called "Harvest Hymn," this text is much more comprehensive than that title implies. It also deals with stewardship, thanksgiving, and God's endless gifts that continue to astound us. It is set to a familiar Welsh tune whose name means "throughout the night."

# Lord, When I Came into This Life 691

1 Lord, when I came in - to this life you  
 2 With - in the cir - cle of the faith, as  
 3 In all the ten - sions of my life, be -  
 4 So help me in my un - be - lief and

called me by my name; to - day I come, com -  
 mem - ber of your cast, I take my place with  
 tween my faith and doubt, let your great Spir - it  
 let my life be true: feet firm - ly plant - ed

mit my - self, re - spond - ing to your claim.  
 all the saints of fu - ture, pres - ent, past.  
 give me hope, sus - tain me, lead me out.  
 on the earth, my sights set high on you.

Written for the confirmation of the author's son, this text of self-dedication also voices our recurring individual need to recommit ourselves in less formal ways. The familiar shape note tune enhances a sense of finding our place among God's people from all times and places.

TEXT: Fred Kaan, 1976

MUSIC: American folk melody; harm. Charles H. Webb, 1988

Text © 1979 The Hymn Society (admin. Hope Publishing Company)

Music Harm. © 1989 The United Methodist Publishing House (admin. The Copyright Company)

LAND OF REST

CM

(alternate harmonization, 545)



# 418 Softly and Tenderly Jesus Is Calling

1 Soft - ly and ten - der - ly Je - sus is call - ing, call - ing for  
 2 Why should we tar - ry when Je - sus is plead - ing, plead - ing for  
 3 O for the won - der - ful love he has prom - ised, prom - ised for

you and for me. See, on the por - tals he's wait - ing and watch - ing,  
 you and for me? Why should we lin - ger and heed not his mer - cies,  
 you and for me! Though we have sinned, he has mer - cy and par - don,

*Refrain*  
 watch - ing for you and for me.  
 mer - cies for you and for me? "Come home, come home!  
 par - don for you and for me. "Come home, come home!

You who are wea - ry, come home." Ear - nest - ly, ten - der - ly,

Je - sus is call - ing, call - ing, "O sin - ner, come home!"

This 19th-century gospel hymn has often been used as a hymn of invitation at evangelistic services. Its imagery is primarily based on Jesus' parable in Luke 15:11-32, commonly called "The Prodigal Son." Each singer thus becomes a wandering child who is urged to return home.